

ACKER



CLAY PROCESSING SOLUTIONS

SOLUZIONI PER LA LAVORAZIONE DELLE ARGILLE

INDEX

« Build according to mechanics and live attuned to nature, or vice versa »

1. The Team
2. Fields of application
3. Our processes
 - a) Dosing and weighing
 - b) Crushing
 - c) Sorting
 - d) Storage
 - e) Rolling Mill
 - f) Mixing
 - g) Extruding
4. Conveyor belt TNV-TNP and Special Conveyor
5. Machines for special and dedicated processes



THE POWER OF A TEAM



Mac.ker was born in early 2014 from a group of professionals, with previous work experience in both technical and managerial roles. The "Mission" of the company is to consolidate the reality in the area by establishing relationships of true trust and collaboration with suppliers and customers, thus generating efficiency and added value for both. Our strengths are:

Experience: the continuous dialogue with our customers and the professionalism gained over the years, allow us to identify the needs and to be able to offer the most appropriate solution to any type of requirement.

Reliability: our machines and equipment comply with all safety standards and are designed to last over time by optimizing maintenance costs and / or replacement of spare parts.

Flexibility: we continue to discover new areas of application for our machines. Our potential allows us to offer single machines or "turnkey" systems.

Availability: we follow the customer in the proposal phase, project development and after-sales with a vision focused mainly on the customer production needs.

FIELDS OF APPLICATION

CLAY INDUSTRY

- Clay preparation
- Forming and Pressing

GREEN INDUSTRY

- Circular economy: topsoil and fertilizer
- Bulk material transport supply for Biogas Plants

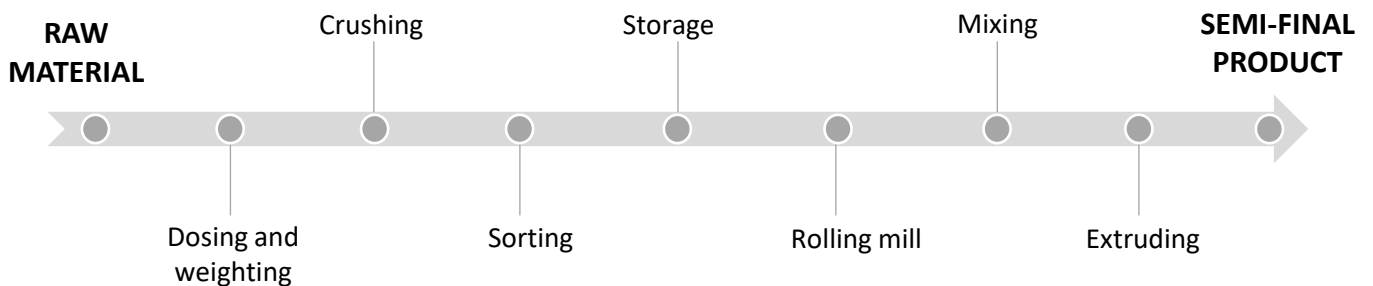
CERAMIC AND CEMENT INDUSTRY

- Raw material preparation

OTHER INDUSTRIES

- Automatic line for pots pressing
- Gypsum and mouldables processing
- Special conveyor belts for metals, woods, pellets and

OUR PROCESSES



Rubber belt Box Feeder type CG



Box feeder for wood industry



Double reel for special materials

TECHNICAL DATA

Type	Belt dimensions mm	Trough height mm	Belt/reel Power kW	Belt speed mt/1'	Capacity m3/h	Weight kg
CG 310	3.000 x 1.000	600	0,75 + 3	0,2 - 2	3,5 - 35	2600
CG 410	4.000 x 1.000	600	1,1 + 3	0,2 - 2	3,5 - 35	3050
CG 510	5.000 x 1.000	600	1,5 + 3	0,2 - 2	3,5 - 35	3300
CG 610	6.000 x 1.000	600	1,5 + 3	0,2 - 2	3,5 - 35	3650
CG 710	7.000 x 1.000	600	2,2 + 4	0,2 - 2	3,5 - 35	4100
CG 412	4.000 x 1.200	600	1,1 + 3	0,2 - 2	5 - 45	3400
CG 512	5.000 x 1.200	600	1,5 + 3	0,2 - 2	5 - 45	3750
CG 612	6.000 x 1.200	600	2,2 + 4	0,2 - 2	5 - 45	4150
CG 712	7.000 x 1.200	600	2,2 + 4	0,2 - 2	5 - 45	4600

Crushing

Storage

Mixing

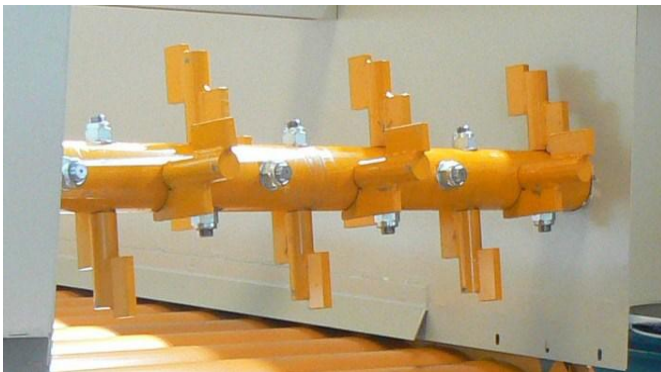
Dosing & weighting

Sorting

Rolling mill

Extruding

Metal belt Box Feeder type CA-NN



Reinforced reel for dry material



Shredder reel for wet material

TECHNICAL DATA

Type	Belt dimensions mm	Trough height mm	Chain features pitch-link-wheel-pin mm	Belt / reel power kW	Belt speed mt/1'	Capacity m ³ /h	Weight kg
CA-NN-310	3.000 x 1.000	600	200 - 70x12 - ø90 - ø28	0,75 + 3	0,2 - 2	3,5 -35	3000
CA-NN-410	4.000 x 1.000	600	200 - 70x12 - ø90 - ø28	1,1 + 3	0,2 - 2	3,5 -35	3600
CA-NN-510	5.000 x 1.000	600	200 - 70x12 - ø90 - ø28	1,5 + 3	0,2 - 2	3,5 -35	4200
CA-NN-610	6.000 x 1.000	600	200 - 70x12 - ø90 - ø28	1,5 + 3	0,2 - 2	3,5 -35	4800
CA-NN-710	7.000 x 1.000	600	200 - 70x12 - ø90 - ø28	2,2 + 3	0,2 - 2	3,5 -35	5400
CA-NN-810	8.000 x 1.000	600	200 - 70x12 - ø90 - ø28	3 + 3	0,2 - 2	3,5 - 35	6100
CA-NN-312	3.000 x 1.200	600	200 - 70x12 - ø90 - ø28	1,1 + 4	0,2 - 2	16558	3450
CA-NN-412	4.000 x 1.200	600	200 - 70x12 - ø90 - ø28	1,5 + 4	0,2 - 2	16558	4150
CA-NN-512	5.000 x 1.200	600	200 - 70x12 - ø90 - ø28	2,2 + 4	0,2 - 2	16558	4850
CA-NN-612	6.000 x 1.200	600	200 - 70x12 - ø90 - ø28	2,2 + 4	0,2 - 2	16558	5500
CA-NN-712	7.000 x 1.200	600	200 - 70x12 - ø90 - ø28	3 + 4	0,2 - 2	16558	7300
CA-NN-812	8.000 x 1.200	600	200 - 70x12 - ø90 - ø28	3 + 4	0,2 - 2	16558	7200

Crushing

Storage

Mixing

Metal belt Box Feeder type CA-M and CA-P



TECHNICAL DATA							
Type	Belt dimensions mm	Trough height mm	Chain features pitch-link-wheel-pin mm	Belt / reel power kW	Belt speed mt/1'	Capacity m ³ /h	Weight kg
CA-M							
CA-M-415	4.000 x 1.500	800	200 - 80x15 - ϕ 110 - ϕ 32	1,5 + 5,5	0,2 - 2	10 - 60	7300
CA-M-515	5.000 x 1.500	800	200 - 80x15 - ϕ 110 - ϕ 32	2,2 + 5,5	0,2 - 2	10 - 60	8600
CA-M-615	6.000 x 1.500	800	200 - 80x15 - ϕ 110 - ϕ 32	3 + 5,5	0,2 - 2	10 - 60	9600
CA-M-715	7.000 x 1.500	800	200 - 80x15 - ϕ 110 - ϕ 32	3 + 5,5	0,2 - 2	10 - 60	10700
CA-M-815	8.000 x 1.500	800	200 - 80x15 - ϕ 110 - ϕ 32	4 + 5,5	0,2 - 2	10 - 60	11800
CA-M-518	5.000 x 1.800	800	200 - 80x15 - ϕ 110 - ϕ 32	2,2 + 7,5	0,2 - 2	15 - 80	9800
CA-M-618	6.000 x 1.800	800	200 - 80x15 - ϕ 110 - ϕ 32	3 + 7,5	0,2 - 2	15 - 80	11000
CA-M-718	7.000 x 1.800	800	200 - 80x15 - ϕ 110 - ϕ 32	4 + 7,5	0,2 - 2	15 - 80	12300
CA-M-818	8.000 x 1.800	800	200 - 80x15 - ϕ 110 - ϕ 32	4 + 7,5	0,2 - 2	15 - 80	14000
CA-P							
CA - P- 618	6.000 x 1.800	800	250 - 100x15 - ϕ 130 - ϕ 40	4 + 7,5	0,2 - 2	20 - 100	12700
CA - P- 818	8.000 x 1.800	800	250 - 100x15 - ϕ 130 - ϕ 40	5,5 + 7,5	0,2 - 2	20 - 100	15700
CA - P- 1018	10.000 x 1.800	800	250 - 100x15 - ϕ 130 - ϕ 40	7,5 + 7,5	0,2 - 2	20 - 100	18700
CA - P- 1218	12.000 x 1.800	800	250 - 100x15 - ϕ 130 - ϕ 40	11 + 11	0,2 - 2	20 - 100	21700
CA - P- 1518	15.000 x 1.800	800	250 - 100x15 - ϕ 130 - ϕ 40	15 + 11	0,2 - 2	20 - 100	28000
CA - PP-623	6.000 x 2.300	1000	300 - 120x20 - ϕ 150 - ϕ 50	7,5 + 11	0,2 - 2	25 - 150	16200
CA-PP-823	8.000 x 2.300	1000	300 - 120x20 - ϕ 150 - ϕ 50	11 + 11	0,2 - 2	25 - 150	19500
CA-PP-1023	10.000 x 2.300	1000	300 - 120x20 - ϕ 150 - ϕ 50	15 + 15	0,2 - 2	25 - 150	24500
CA-PP-1223	12.000 x 2.300	1000	300 - 120x20 - ϕ 150 - ϕ 50	22 + 15	0,2 - 2	25 - 150	29800

Crushing

Storage

Mixing

Dosing & weighting

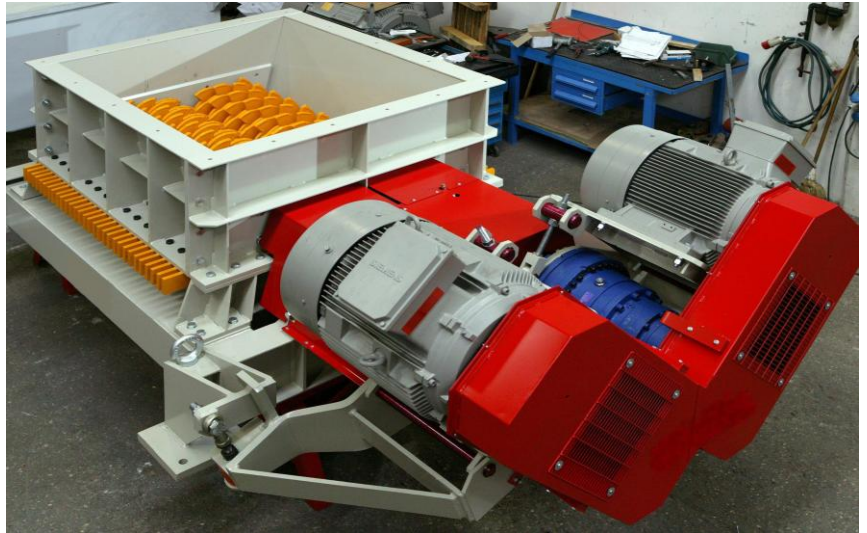
Sorting

Rolling mill

Extruding

Primary Crusher tipo CL

Material size in : 500-600 mm
Material size out : 100-150 mm



Fine Crusher FC

Material size in : 200-300 mm
Material size out : 30-50 mm



TECHNICAL DATA

Type	Cylinders dimensions mm	Mohs Hardness	Power kW	Cylinders speed r.p.m.	Capacity m ³ /h	Weight kg
CL 10	400 x 1.000	3	7,5 - 7,5	50	40	1800
CL 15	650 x 1.400	4	15 - 15	30	130	4000
CL 20	750 x 2.000	4	30 - 30	30	200	6500

TECHNICAL DATA

Type	Cylinder dimensions mm	Mohs Hardness	Power kW	Cylinders speed r.p.m.	Capacity m ³ /h	Weight kg
FC7	550 x 700	4	18,5 + 22	35 - 40	35	4500
FC10	550 x 1.000	4	30 + 45	35 - 40	70	8600
FC15	550 x 1.500	4	55 + 55	40 - 40	100	10000
FC20	600 x 2.000	5	90 + 90	40 - 40	140	15000
FC25	700 x 2.500	5	132 + 132	43 - 43	250	22000
FC30	750 x 3.000	5	200 + 200	45 - 45	400	30000

Crushing

Storage

Mixing

Wet Pan Mill type ML



Wheel scraper



TECHNICAL DATA

Type	Cylinder dimension ϕ /mm	Through diameter ϕ /mm	Cylinder weight in/out kg	Power kW	Output m ³ /h	Weight kg
ML 18.7	1.850 x 700	4200	8.500-11.000	90	40 - 60	50000
ML 20.8	2.000 x 800	4800	13.500-18.000	160	65 - 90	90000

Crushing

Storage

Mixing

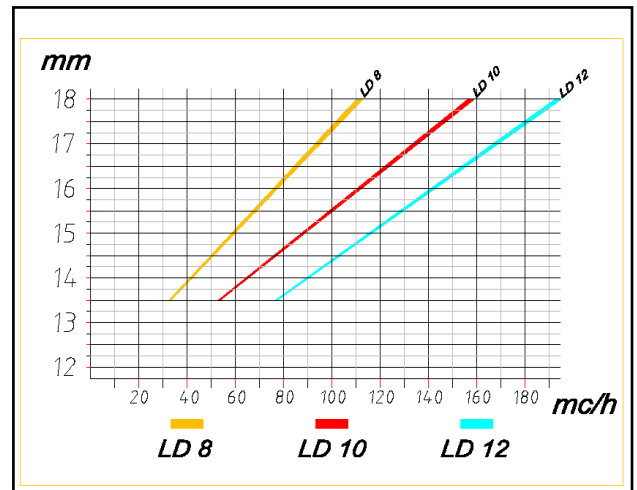
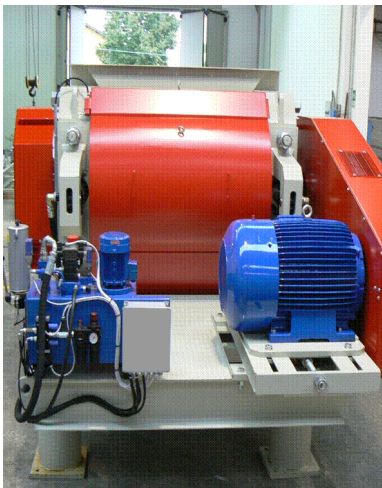
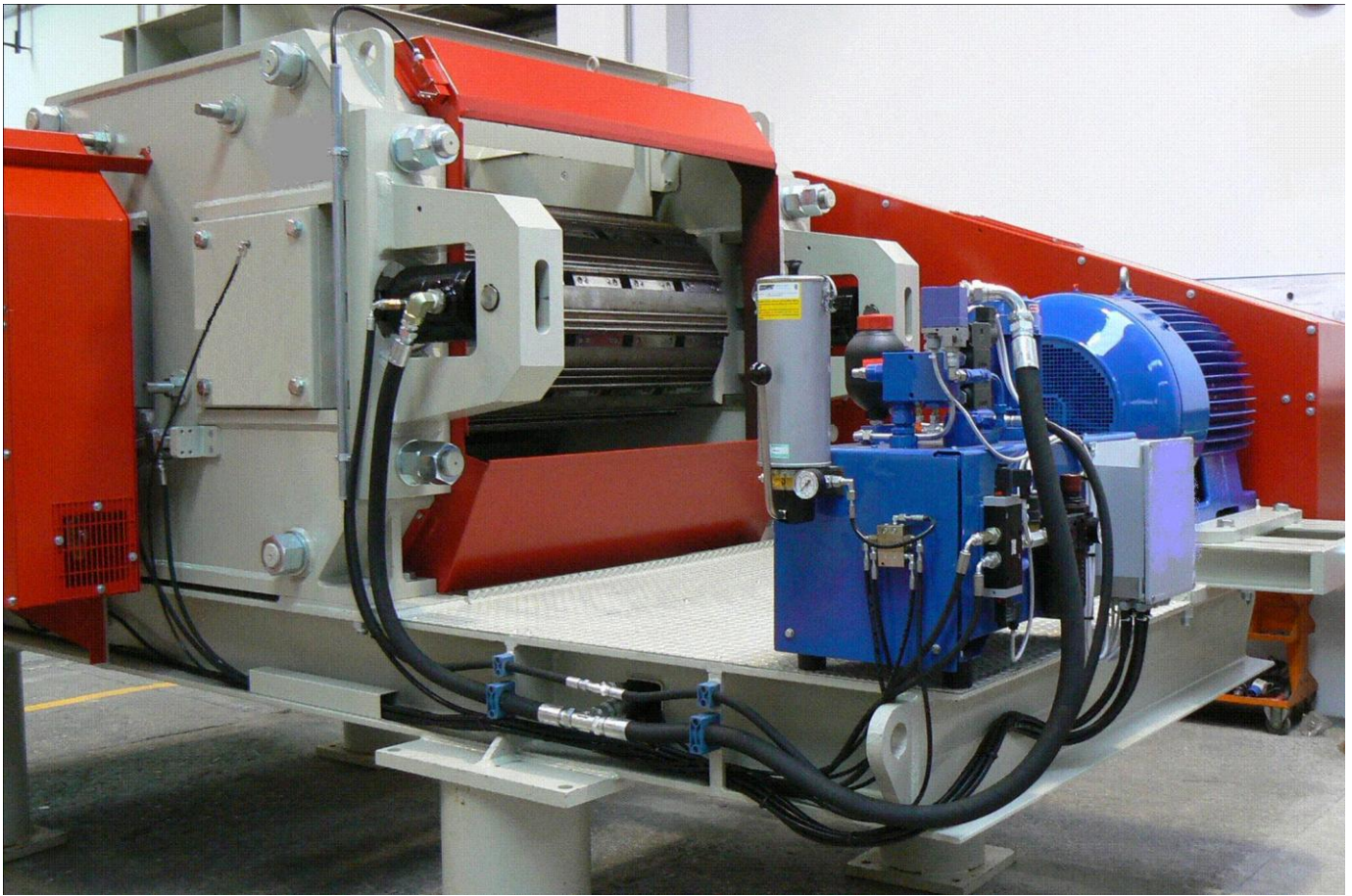
Dosing & weighting

Sorting

Rolling mill

Extruding

Disintegrator type LD



TECHNICAL DATA							
Type	Fast cylinder dimensions ϕ /mm	Slow cylinder dimensions ϕ /mm	Slow cylinder speed r.p.m.	Fast cylinder speed r.p.m.	Slow cylinder power kW	Fast cylinder power kW	Weight kg
LD 8	500 x 800	800 x 800	30	720	15	37	12000
LD 10	600 x 1.000	800 x 1.000	30	720	22	75	16000
LD 12	650 x 1.200	1.000 x 1.200	30	680	30	90	20000

Crushing

Storage

Mixing

Clay Sorter type FR



TECHNICAL DATA

Type	Cylinder dimensions ø/mm	Holes diameter ø/mm	Power kW	Rotation speed r.p.m.	Output m3/h	Weight kg
FR 12.4	1.200 x 400	14 - 15	11 + 11	33	15	5800
FR 15.6	1.500 x 600	16 - 18	30 + 30	26	40	11500
FR 15.7	1.500 x 700	16 - 18	37 + 37	26	50	12200
FR 18.7	1.800 x 700	16 - 18	45 + 45	22	65	21000
FR 18.8	1.800 x 800	19 - 20	55 + 55	22	75	23000
FR 20.8	2.000 x 800	19 - 20	55 + 55	20	90	29500
FR 20.10	2.000 x 1.000	19 - 20	75 + 75	20	100	30500
FR 25.12	2.500 x 1.200	22 - 25	75 x 4	20	150	44000

Crushing

Storage

Mixing

Dosing & weighting

Sorting

Rolling mill

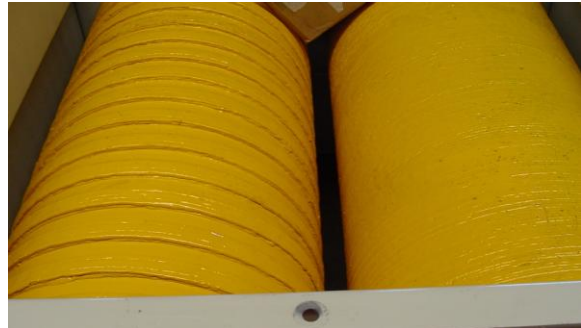
Extruding

Roller stone Remover type SPR



TECHNICAL DATA

Type	Cylinders dimensions ø/mm	Cylinders speed r.p.m.	Power kW	Cylinder gap mm	Output m3/h	Weight kg
SPR 11	500 x 1.100	72	15 + 15	20	65	3600
SPR 14	600 x 1.400	72	30 + 30	20	100	5500

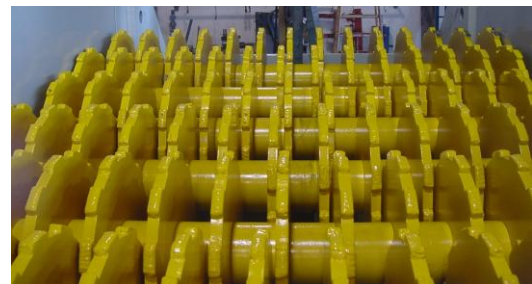


Combined Screen type VCA



TECHNICAL DATA

Type	Roller dimension ø/mm	Reel dimension ø/mm	Rollers power kW	Reel el. power kW	Stone max size mm	Output m3/h	Weight kg
VCA 10	400	750	1,1 x 7	11 + 11	300 - 400	70	8000
VCA 14	400	750	1,5 x 7	15 + 15	300 - 400	110	10000
VCA 20	600	1200	2,2 x 7	22 + 22	400 - 500	160	17000



Crushing

Storage

Mixing

Storage Systems



Crushing

Storage

Mixing

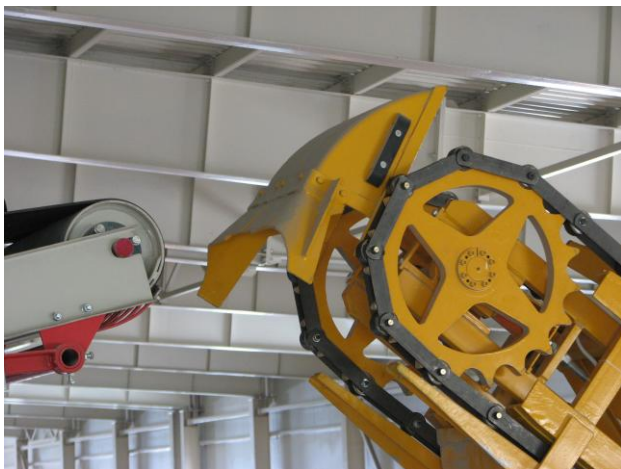
Dosing & weighting

Sorting

Rolling mill

Extruding

Bucket Excavator ECS-ECSS



TECHNICAL DATA

Type	Bucket capacity lt.	Chain features pitch-link-wheel mm	Power kW	Capacity m3/h
ECS 04	40	200 - 45x5 - ø70	2 x 7,5	0 - 45
ECS 06	60	250 - 60x8 - ø90	2 x 11	40 - 70
ECS 08	80	250 - 60x8 - ø90	2 x 15	60 - 100
ECS 12	120	250 - 60x8 - ø90	2 x 22	80 - 130
ECS 20	200	320 - 80x15 - ø130	2 x 30	120 - 200
ECS 25	250	320 - 80x15 - ø130	2 x 37	200 - 280

Crushing

Storage

Mixing

Bridge bucket Excavator ECS-ECSS



TECHNICAL DATA

Type	Bucket capacity lt.	Chain features pitch-link-wheel mm	Power kW	Capacity m3/h
ECP 04	40	200 - 45x5 - ϕ 70	2 x 7,5	0 - 45
ECP 06	60	250 - 60x8 - ϕ 90	2 x 11	40 - 70
ECP 08	80	250 - 60x8 - ϕ 90	2 x 15	60 - 100
ECP 12	120	250 - 60x8 - ϕ 90	2 x 22	80 - 130
ECP 20	200	320 - 80x15 - ϕ 130	2 x 30	120 - 200
ECP 25	250	320 - 80x15 - ϕ 130	2 x 37	200 - 280

Crushing

Storage

Mixing

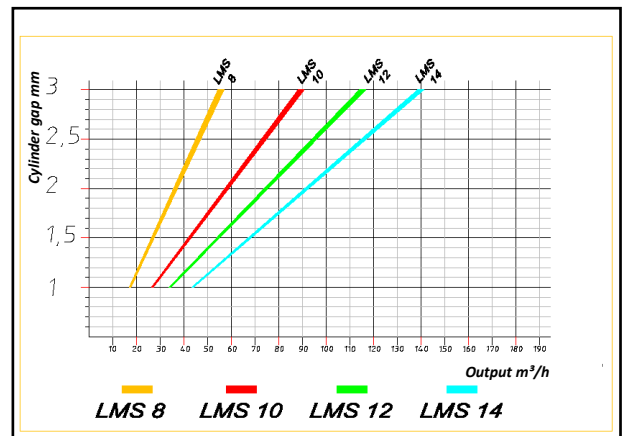
Dosing & weighting

Sorting

Rolling mill

Extruding

Roller Mill type LMS



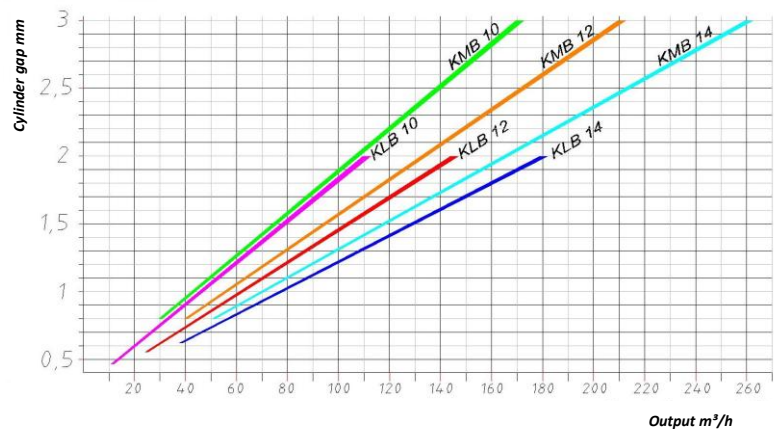
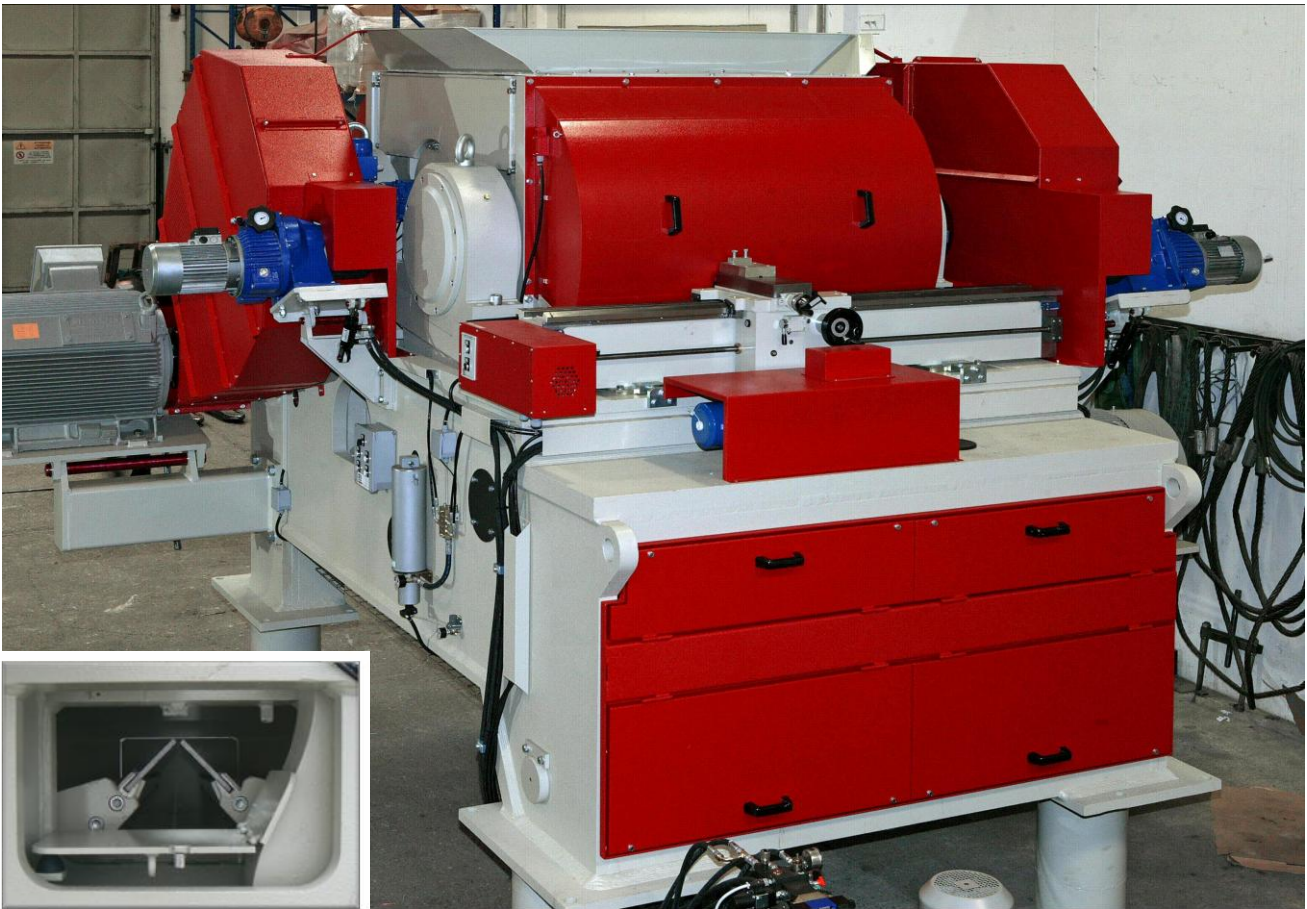
TECHNICAL DATA							
Type	Cylinders dimension ø/width mm	Slow cylinder speed r.p.m.	Fast cylinder speed r.p.m.	Slow cylinder power kW	Fast cylinder power kW	Lamination force kg/mm	Weight kg
LMS 8	600 x 800	325	360	45 - 6p	75 - 6p	50	9000
LMS 10	800 x 1.000	280	300	75 - 6p	90 - 6p	50	19500
LMS 12	1.000 x 1.200	215	230	90 - 6p	110 - 6p	50	25000
LMS 14	1.000 x 1.400	215	230	110 - 6p	132 - 6p	50	27500

Crushing

Storage

Mixing

Swinging fine Roller Mill KMB / KLB



TECHNICAL DATA

Type	Cylinders dimension ø/width mm	Slow cylinder speed r.p.m.	Fast cylinder speed r.p.m.	Slow cylinder power kW	Fast cylinder power kW	Lamination force kg/mm	Weight kg
KMB 10	800 x 1.000	280	300	75 - 6p	90 - 6p	100	28000
KMB 12	1.000 x 1.200	215	230	90 - 6p	110 - 6p	100	37000
KMB 14	1.000 x 1.400	215	230	110 - 6p	132 - 6p	100	46000
KLB 10	800 x 1.000	215	290	45 - 8p	132 - 6p	150	32000
KLB 12	1.000 x 1.200	170	230	55 - 8p	160 - 6p	150	42000
KLB 14	1.200 x 1.400	145	190	75 - 8p	200 - 6p	150	52000

Crushing

Storage

Mixing

Dosing & weighting

Sorting

Rolling mill

Extruding

Double Shaft Mixer MD



TECHNICAL DATA

Type	Auger diameter ϕ /mm	Trough dimension mm	Mixer power kW	Reels Power kW	Output m ³ /h	Weight kg
MD 500	500	900x3.000	2	45	32 - 50	6000
MD 600	600	1.000x3.300	2	75	50 - 78	7500
MD 700	700	1.200x3.500	2	90	78 - 120	10500
MD 800	800	1.450x3.700	2	132	120 - 170	14000

Mono shaft Mixer LKM

TECHNICAL DATA

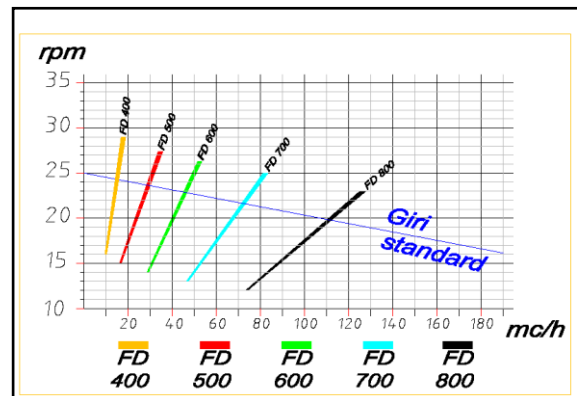
Type	Auger diameter ϕ /mm	Trough dimension mm	Mixer power kW	Reels Power kW	Output m ³ /h	Weight kg
LKM 500	500	550x2500	22	3 + 3	18 - 32	3500
LKM 600	600	650x2800	45	4 + 4	32 - 50	6000
LKM 700	700	750x3000	75	4 + 4	50 - 78	7600
LKM 800	800	850x3200	90	5,5 + 5,5	78 - 120	10500

Crushing

Storage

Mixing

Double Shaft Screening Mixer FD



TECHNICAL DATA					
Type	Auger diameter ϕ /mm	Trough dimension mm	Mixer power kW	Reels Power kW	Weight kg
FD 400	400	750x1.600	2	30	5700
FD 500	500	900x1.900	2	55	7500
FD 600	600	1.000x2.200	2	90	10300
FD 700	700	1.200x2.600	2	132	13200
FD 800	800	1.450x3.000	2	250	20000

Mono shaft Screening Mixer LKF

TECHNICAL DATA					
Type	Auger diameter ϕ /mm	Trough dimension mm	Mixer power kW	Reels Power kW	Weight kg
LKF 500	500	550x1.900	30	3 + 3	4800
LKF 600	600	650x2.200	55	4 + 4	8000
LKF 700	700	750x2.400	90	4 + 4	10500
LKF 800	800	850x3.000	132	5,5 + 5,5	13800
LKF 1.000	1000	1.050x3.700	250	7,5 + 7,5	22000

Crushing

Storage

Mixing

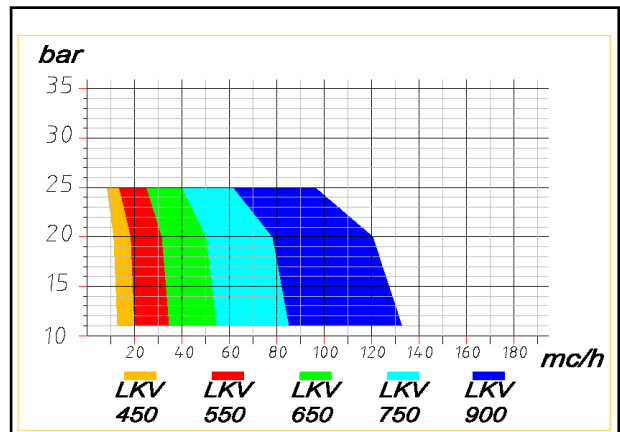
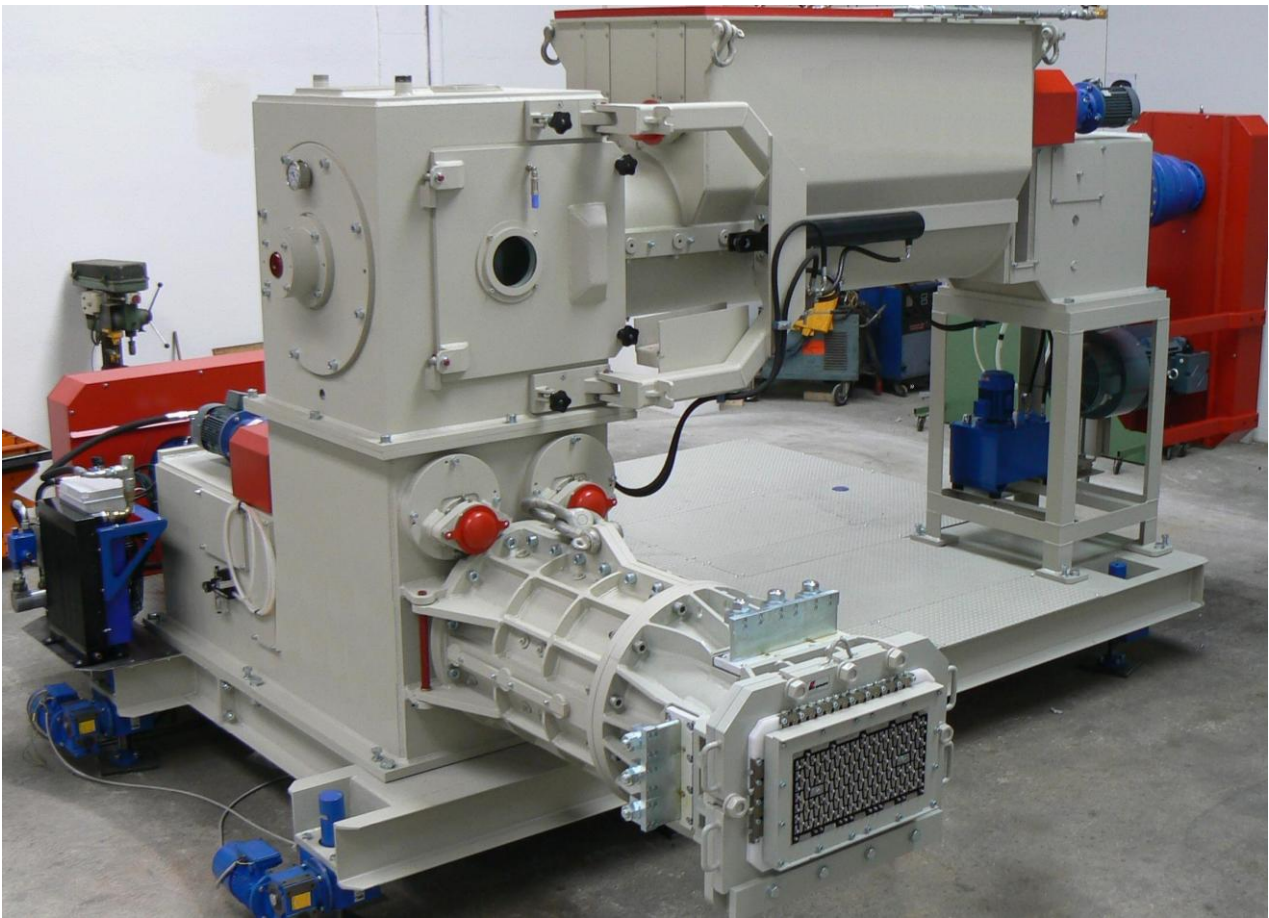
Dosing & weighting

Sorting

Rolling mill

Extruding

Vacuum Extruder with mono shaft Mixer LKV



TECHNICAL DATA

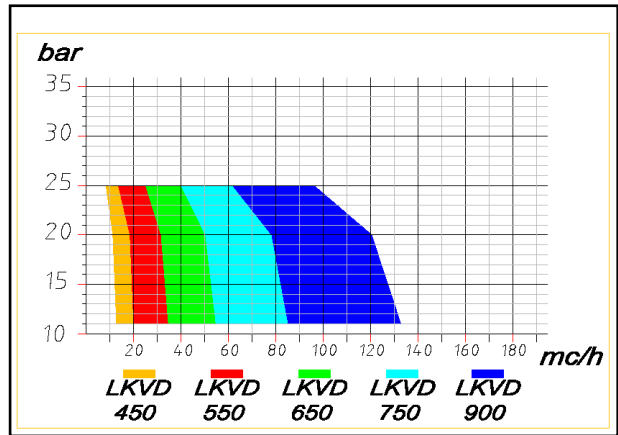
Type	Auger diameter ø/mm	Extruder power kW	Screw diameter mm	Mixer power kW	Max working pressure bar	Weight kg
LKV 450	450	90	500	30	25	5.500 + 6.000
LKV 550	550	160	600	55	25	7.000 + 9.000
LKV 650	650	250	700	90	25	10.500 + 12.000
LKV 750	750	355	850	132	25	19.000 + 17.700
LKV 900	900	630	1000	250	25	35.000 + 23.700

Crushing

Storage

Mixing

Vacuum Extruder with double shaft Mixer LKVD



TECHNICAL DATA						
Type	Auger diameter ø/mm	Extruder power kW	Screw diameter mm	Mixer power kW	Max working pressure bar	Weight kg
LKVD 450	450	90	FD/V 400	30	25	5.500 + 7.500
LKVD 550	550	160	FD/V 500	55	25	7.000 + 9.800
LKVD 650	650	250	FD/V 600	90	25	10.500 + 13.500
LKVD 750	750	355	FD/V 700	132	25	19.000 + 17.000
LKVD 900	900	630	FD/V 800	250	25	35.000 + 25.000

Crushing

Storage

Mixing

Dosing & weighting

Sorting

Rolling mill

Extruding

Belt Conveyors TNV/TNP and Special Conveyors



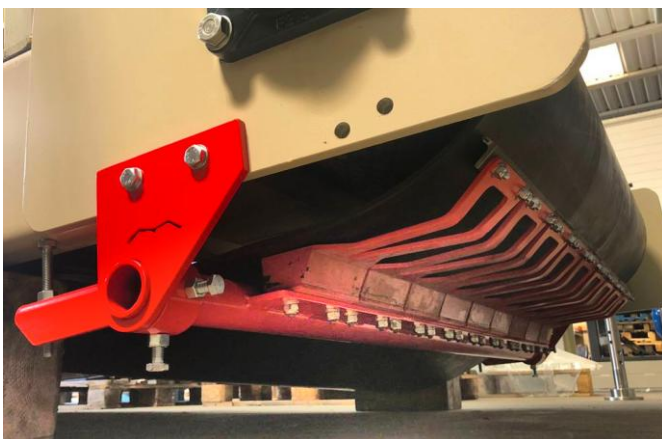
Outdoor storage system



Roller mill feeding system with magnet and double spreading device



Spreading effects



Example of a scraper with pre-loading and with contact points in Widia

Belt Conveyors TNV/TNP and Special Conveyors

GREEN INDUSTRY



System of diversified mixtures of topsoil and fertilizers



Customized TNV with rubber belts for raw materials feeding in Biogas / Biomethane plants

Machines for Special and Dedicated Processes

CLAY INDUSTRY

Forming and pressing for clay pots



Presses for pots and windows boxes



Automations and robots for handling and finishing pots

*Up: Vacuum handler
Down: Mechanical handler*

Machines for Special and Dedicated Processes

CLAY INDUSTRY
Laboratory extruder with
vacuum pump



GREEN INDUSTRY
Green crusher

CEMENT INDUSTRY
Lime production machine



Machines for Special and Dedicated Processes

OTHER INDUSTRIES – Dedicated extruders



Teflon-coated extruder for mouldables

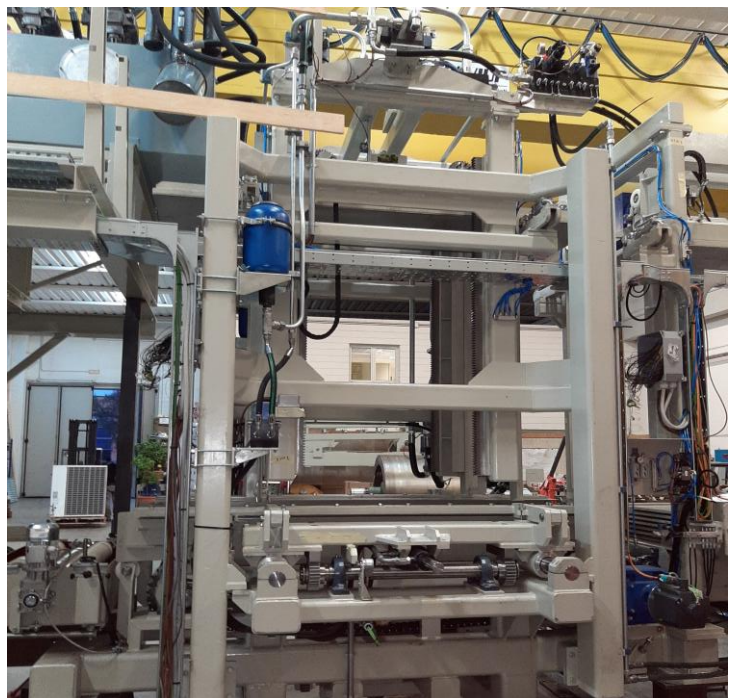


Gypsum extruder with integrated cooling system

GREEN INDUSTRY – Press for wood-cement insulation panels



Hydraulic unit of the press for insulation panels



Machines for Special and Dedicated Processes

GREEN INDUSTRY– Turnkey Plants



Vegetable soil treatment plant for a leading client company in the circular economy sector



Example of a turnkey system: management of mechanical, electrical and automation design, supply, transport, assembly and start-up



MAC.KER srl

Via F. Severi, 18
35011 Campodarsego (PD)
ITALY

Ph. +39 049 0976743 Fax +39 049 706291

info@macker.it

www.macker.it

